

Ph.: 011-25683304

e-mail-dgmosdtl@gmail.com

**DELHI TRANSCO LIMITED**

**Office of DGM (OS & Lines)**

**Convener (Operation Co-ordination Committee)**

**Room No. 10, 1st floor, 220KV S/ Stn. Bldg.,**

**Naraina, C.O.D., Ring Road, New Delhi-110010**

No. F.DTL/831/F.4/2014-15/DGM (OS & Lines)/88

Date: 26.08.2014

To: **Members of Operation Co-ordination committee**

DTL	General Manager (O&M)-I Chairman OCC	Fax no. 011-23366160
	General Manager (O&M)-II	
	GM (Planning)	Fax No.011-23622707
	DGM (O&M)-I, II & III	
	DGM(400kV)	
	DGM (M/P)	Fax no. 011-23366160
	DGM(Plg.)	Fax No.011-23632031
SLDC	General Manager (SLDC)	Fax no. 011-23221069
	DGM (SO)	Fax no. 011-23221059, 23221012
TPDDL	HOD (PSC &AM)	Fax no. 011-66050602
	Sr. Manager (PSC)	Fax no. 011-66050602
BRPL	Asstt. Vice President (SO)	Fax no. 011-39996549
BYPL	Dy. General Manager (SO)	Fax no. 011-39996549
NDMC	Superintending Engineer	Fax no. 011-23235754
IPGCL	DGM (I/C) RPH	
	DGM (O) GTPS	
PPCL	DGM (O) PPCL	
MES	AEE/M.SLDC Officer	
BTSP	AGM (EEMG)	Fax no. 011-26944348
BBMB	Sr. Executive Engineer, O&M	Fax no. 011-28315542
NR	Sr. DEE (Northern Railway) – Special Invitee	Fax No. 011-23742667
DMRC	DGM (Elect.) – Special Invitee	

विषय: प्रचालन समन्वय उपसमिति बैठक दिनांकित दिनांकित 27.08.2014 (बुधवार) अपराह्न 03:00 बजे की कार्यसूची ।

Sub: Agenda of OCC Meeting dated 27.08.2014 (Wednesday) at 03:00 P.M

प्रचालन समन्वय उपसमिति की बैठक दिनांक 27.08.2014 (बुधवार) अपराह्न 03:00 बजे, प्रथम मंजिल, सम्मेलन कक्ष, एस एल डी सी भवन, मिंटो रोड, नई दिल्ली के कार्यालय में संलग्न कार्यसूची के अनुरूप आयोजित की जाएगी ।

कृपया बैठक में उपस्थित होने का कष्ट करें।

The OCC meeting is scheduled to be held on dt. 27.08.2014 (Wednesday) at 03:00 P.M in the Conference Room, 1<sup>st</sup> Floor, SLDC Building, Minto Road, New Delhi in accordance with agenda enclosed herewith.

Kindly attend the meeting.

(लवलीन सिंह)

(Loveleen Singh)

उपमहाप्रबंधक (प्रचालन सेवाएं एवं लाइन्स)

Dy.General Manager (Operation Services & Lines)

संयोजक, प्रचालन समन्वय उपसमिति

Convener, Operation Coordination Committee

Encl: Agenda of OCC meeting dt. 27.08.2014 (Wednesday)

**DELHI TRANSCO LIMITED**  
(Regd. Office: Shakti Sadan, Kotla Road, New Delhi-110002)  
**Office of Dy. Gen. Mgr. (OS & Lines)**  
220KV S/Stn. Bldg. Naraina, New Delhi-110010  
Tele: 25683304

**AGENDA OF OCC MEETING DT. 27.08.2014**

**Date** : 27.08.2014 (Wednesday)  
**Time** : 03:00 PM  
**Venue** : Conference Room, SLDC Building, Minto Road.

**1.0 Confirmation of minutes of OCC meeting dt. 30.07.2014**

Last OCC meeting was held on 30.07.14 in accordance with the agenda circulated vide letter dt.28.07.14. Minutes of the aforesaid OCC meeting were issued vide letter dated 07.08.2014.

Members may like to confirm the same.

**2.1 Setting up of control room by MES.**

In earlier OCC meeting dt. 03.03.14, SLDC informed that they are providing consultancy to MES for setting up of control room at Khyber Line. The estimate had been prepared by SLDC and the tender has been floated by MES.

During OCC meeting dt. 30.07.14, SLDC informed that consultancy agreement is yet to be signed by MES.

MES to update.

**2.2 Shifting of Control Room of NDMC from SLDC building**

In OCC meeting dt. 30.07.14, NDMC informed that two damaged fiber cables i.e. Minto Road – Connaught Place and Minto Road – Raja Bazaar which are connected to newly constructed control room of NDMC at Nirman Bawan have been rectified and the work of establishment of connectivity is in progress.

NDMC to update.

**2.3 Establishment of new Control Room for DTL**

During OCC Meeting dt. 30.07.14, GM(O&M)-I informed that KEMA in its report to DTL stated that the transition from a single SLDC to a new SLDC/transmission switching centre would be much simpler if both are located in the same building and even more so, if they are located on the same floor. Accordingly, DTL Centralized control room center should be located in the same building preferably on the same floor.

DTL to update the status.

## 2.4 BBMB issues on 220kV Rohtak Road S/S

In earlier OCC meeting, DTL informed that meeting with BBMB was held in CEA on 21.02.2014 and the options for establishment of 220kV Substation at Rohtak road by connecting it to 400kV Mundka substation as per decision taken in the 10<sup>th</sup> GCC Meeting held on 29.01.2014 explored during the joint visit of 220kV BBMB Rohtak Road S/Stn. by the officers from DTL, TPDDL, BRPL and BBMB on dt. 10.02.14 were discussed. The action shall be initiated as per the minutes of meeting of CEA. The meeting was held in the office of Member (GO&D), CEA on dt 21 Feb.2014.

During the meeting with CEA, the following deliberations were made:

DTL stated that Rohtak Road substation was being fed radially through 220 kV Narela-Rohtak Road D/C line. Re-conductoring of this line would require shutdown of both the circuits, which would lead to loss of supply in Central Delhi area being fed from Rohtak Road substation. Therefore, shutdown of this line was an issue. He further suggested that to avoid loss of supply in Central Delhi, Rohtak Road substation would require to be fed from some alternate source. For this purpose, DTL suggested various options viz. (i) LILO of one circuit of 220 kV Peeragarhi - Wazirpur line at Rohtak Road, (ii) LILO of both the circuits of 220 kV Peeragarhi-Wazirpur circuits at Rohtak road, (iii) Establishment of a 400 kV GIS substation at Rohtak Road and to provide 400 KV in-feed by using the existing corridor & upgradation of existing 220 kV Narela - Rohtak Road transmission line, (iv) Conversion of existing 33 kV AIS to 33 kV GIS at Rohtak Road substation of TPDDL and subsequently establishment of 220 kV GIS substation on the space vacated by means of LILO of 220 kV Peera Garhi - Wazir Pur cables. DTL further stated that erection of a GIS Sub-station would be a long term solution in addition to re-conductoring of the Narela-Rohtak Road line for reliable supply to Rohtak Road substation. In this regard, NRPC opined that re-conductoring of line and construction of GIS Substation work are separate issues and GIS substation work can be taken up in future as system strengthening work. The proposal for GIS substation work could be put up by DTL to the Standing Committee on Power System planning of CEA.

Further, it was decided that DTL and BBMB would jointly discuss & finalise the course of action to be adopted prior to re-conducting of Narela-Rohtak Road line without loss of supply from the Grid. DTL agreed to take up re-conducting works of Narela-Rohtak Road. The proposal for setting up of GIS substation can be put up by DTL to the Standing Committee on Power System Planning.

Other decisions taken in regard to re-conductoring of 220kV Narela-Rohtak Road D/C line are as given below:

1. Independent joint inspection by DTL and BBMB to identify and if needed, test apparently weak towers could be done at the earliest and if required, those could be changed.
2. The work of re-conductoring of line will be taken up by DTL as deposit work of BBMB.
3. All the expenses in connection with re-conductoring of line including replacement of worn tower members will be borne by BBMB, who will also arrange all kinds of clearances including those from Railways.

As per the decision taken by CEA, an independent joint physical inspection of all the towers of 220kV Narela - Rohtak Road D/C line has been carried out by the team of engineers from DTL and BBMB. The inspecting team has observed that towers of the line are fit for carrying out re-conductoring work with new Goat conductor, insulators and fittings.

During the meeting dt. 30.07.14, OCC again advised DTL's planning division to prepare the scheme for the aforesaid re-conductoring work and take up with Standing Committee on Power System Planning, CEA for long term planning.

DTL to update.

## **2.5 Status of Installation of Capacitors – Study by Planning Deptt., DTL**

DTL had entrusted the study of installation of shunt capacitors in Delhi system to CPRI on the advice of OCC. CPRI is carrying out the study accordingly for reactive power compensation in Delhi. A draft report has been submitted by CPRI and DTL had discussed it with DISCOMS in a separate meeting on dt. 08<sup>th</sup> & 09<sup>th</sup> January, 2014 as advised by Delhi OCC in its meeting dt.30.12.13.

Later, a meeting was held on 02.07.14 by planning department of DTL to discuss the Final report of reactive power compensation study carried out by CPRI.

Final report is to be submitted by CPRI after including the suggestions/recommendations made during the meeting dt. 02.07.14.

SLDC informed that during NRPC meeting, it was deliberated that Delhi requires another 1300MVAR capacity of Capacitors in Delhi System.

DISOCMS informed that final report submitted by CPRI is acceptable for Low Voltage Conditions; however, for high voltage (Over Voltage) condition, the report needs some modifications.

OCC advised DTL to put up outcome of study in the next OCC meeting.

DTL to deliberate the outcome of final report of CPRI on installation of Shunt Capacitors in Delhi System.

## **2.6 Status of Hot Reserve of transformers at all levels.**

DTL to update the status of following hot reserves:

<b>S. No</b>	<b>Capacity</b>	<b>Present population in nos.</b>	<b>Status of the hot reserve as on 29.05.14</b>	<b>Remarks</b>
1	220/66kV, 160MVA Tx	7	160MVA Tx earmarked for 220kV Pappan Kalan-II was	DTL informed that 160 MVA transformer at

			proposed be the hot reserve.	Papankalan –II will remain hot reserve
2	220/66kV, 100MVA Tx	42	DTL informed that 220/66-33/11kV, 100MVA Tx at 220kV Patparganj S/Stn. proposed as hot reserve is at site i.e. at 220kV S/Stn. Patparganj.	DTL informed that foundation work is in progress.
3	220/33kV, 100MVA Tx,	33		

On the DTL proposal to keep 1 No. 100 MVA 220/33/11kV power transformer as hot reserve at 220kV Patparganj station so as to serve as a standby arrangement in case of emergency, since procurement of new transformer usually takes around 1 year and to meet any exigencies arising out of any power transformer, for use as hot reserve for restoration of power supply, in a meeting held on dated 11.02.2014, DERC asked DTL to explore the option of keeping a transformer in cold reserve, as it may not be easy to transport an oil filled transformer.

In earlier OCC meeting, DTL informed that the transformer can be kept as cold reserve and the entire requisite test for health monitoring of Power transformer should be done periodically. BYPL requested that the practices of PGCIL regarding keeping the transformer as cold reserve may be confirmed and action may be taken accordingly.

In OCC meeting dtd. 29.05.14, DTL informed that they have written a letter to M/s PGCIL and reply for the same is awaited. Further, OCC also advised DTL's planning to carry out study on the matter.

DTL informed that no letter has been received from PGCIL. OCC advised DTL to follow-up with PGCIL.

DTL to update.

## 2.7 Long/Recent outage of Elements in Delhi power system as on 26.08.2014 at 08:00 Hrs.

Members to update the status of Long/Recent outage of Elements in Delhi Power system as below:

S. No.	Element's Name	DISCOM /DTL	Date and Time of outage	Remarks/ Status as on 30.07.2014
1	66kV VASANT KUNJ - RIDGE VALLEY CKT.-II ('Y' PH. CABLE)	BRPL	13.01.14	BRPL informed that one of the cables is expected by the end of August, 2014.
2	33kV BAY -3 (IP - KILOKRI)	BRPL	22.02.11	Clearance from Railways for laying of Underground cables near Bhairon Road is pending..
3	33kV OKHLA(220kV) ALAKHNANDA CKT.-I	-	BRPL	17.09.13 GIS bay at Alkananda Grid is faulty. In last OCC, BRPL informed meeting

				with BHEL, Bhopal taken place spares are being arranged. Expected by end of August, 2014
4	33kV BAY-5 (IP - LAJPAT NAGAR) ALONG WITH 33KV ½ BUS AT LAJPAT NGR	BRPL	01.03.14	BRPL informed meeting with BHEL, Bhopal taken place spares are being arranged. Expected by end of August, 2014
5	33kV KILOKRI - JAMIA CKT. ('R' & 'B' PH. CABLE)	BRPL	15.03.14	Expected by 15.08.14
6	33kV NIZAMUDDIN - EXHIBITION GROUND-I CKT (Y PHASE CABLE)	BRPL	23.06.14	Expected by 15.08.14
7	33kV OKHLA (220kV) - NEHRU PLACE CKT. -IV('Y' PH. SINGLE CABLE)	BRPL	31.05.14	Expected by 15.08.14
8	33kV VSNL - NEHRU PLACE CKT. (SINGLE CABLE)	BRPL	02.07.14	Expected by 15.08.14
9	33kV KILOKRI - MEDICAL CKT. (SINGLE CABLE)	BRPL	06.08.14	Recent
10	33/11kV 16MVA PR.TR.-II AT PUSHUP VIHAR(UNDER SHUT DOWN)	BRPL	04.08.14	Recent
11	66/33kV 50MVA PR.TR.-III AT MALVIYA NAGAR (SHUT DOWN)	BRPL	19.08.14	Recent
12	33/11kV 20MVA PR.TR.-IV AT VISHAL	BRPL	12.08.14	Recent
13	66kV MUNDKA(400kV) - NANGLOI WATER WORKS CKT.	BRPL	25.08.14	Recent
14	66/33kV 50MVA PR. TR.-I AT GONDA	BYPL	15.06.14	Detailed inspection required. Expected date is one month from date of completion of inspection
15	33kVBHAGIRATHI - DWARKAPURI CKT. ('Y' & 'B' PH. SINGLE CABLE)	BYPL	06.08.14	Recent
16	33KV KARKARDOOMA - KANTI NAGAR CKT-I	BYPL	07.08.14	Recent
17	66kV PPG(220kV)- KHICHRIPUR CKT. ('B' PH. CABLE)	BYPL	17.08.14	Recent
18	33kV ROHTAK ROAD - PRASAD NAGAR CKT. (Y'PH. CABLE)	BYPL	17.08.14	Recent
19	33kV GONDA- U/G SEELAMPUR CKT. (ALL PHASE CKT.)	BYPL	25.08.14	Recent
20	66kV PPK - REWARI LINE CKT. ( ONE CABLE)	TPDDL		New scheme is in process. After implementation of the new scheme, this line will be dumped.
21	33KV TRAUMA CENTRE - SAFDARJUNG AIR PORT CKT.	NDMC	10.07.14	GIS Panel of DTL faulty. OCC advised DTL to look

				into the issue
22	33KV TRAUMA CENTRE - AIIMS CKT.-III	NDMC	25.07.14	-do-
23	33kV BAY -28 (IP - CONNAUGHT PLACE)	NDMC	06.08.14	Recent
24	220KV MAHARANI BAGH - MASJID MOTH CKT-I	DTL	14.06.14	Cable faulty. Cable damaged during digging by PGCIL contractor. Expected by the end of August, 2014

## 2.8 Shifting of Control Room at 220kV Indra Prastha Substation.

DTL informed that 220kV GIS is proposed at existing 220kV IP Substation and the same is under process for approval with Board of Directors, DTL. Further, the Control Room is to be shifted from first floor of generation main building (being dismantled) to new place in the switchyard.

Earlier, OCC advised DTL to strengthen the security staff of the 220kV I.P. Substation in order to minimize the theft of cables and other equipments till materialization of shifting of control room. Further, OCC has also advised DTL's planning to expedite finalization of the scheme for new control room at 220kV I.P. Substation.

DTL informed that a site visit is scheduled for 31.07.14 at 10:00 A.M. to decide the location for establishing new Control Room. OCC advised DTL Planning department to explore the scheme and advised to take the issue as priority one. OCC also advised DTL to prepare the scheme as GIS feasible.

DTL informed the new control room at IP shall be expected by the end of May, 2015

DTL to update the outcome of site visit dt. 31.07.14.

## 2.9 Non-trippings of breakers at BRPL end for 11kV feeders emanating from 220kV S/S Najafgarh.

DTL informed that the below mentioned trippings occurred at 220kV Substation Najafgarh in 11kV System.

Sr. No.	Feeder Name	Date and of Breakdown Time	Restoration Time	Tripping details	Remarks
1.	11KV 7 Panel board	02.01.2014 1:35 Hrs.	02.01.2014 18:45 Hrs.	Feeders trip on earth fault with heavy sound.	Cable end boxes connected with DTL switch gear panel got burnt.
2.	11KV Deenpur	07.01.2014 05.15 Hrs.	07.01.2014 14:00 Hrs.	Feeders trip on earth fault and	It was noticed that cable end boxes

				O/C	connected with DTL switch gear panel got burnt.
--	--	--	--	-----	---

In each of the above trippings, the cable end boxes of the feeders got damaged/ burnt and supply remained affected. It is gathered that fault was not cleared at BRPL end due to which one CT of the affected feeder got damaged.

DTL informed that Najafgarh Substation is experiencing frequent trippings at 11kV level due to unhealthy protection system at BRPL end. OCC advised BRPL to check up the healthiness of protection system at their end to avoid damage to DTL system. During last OCC meeting BRPL inform that on these feeders first switching progress are by passed for protection and they are taking necessary action for retrofit and repair.

OCC once again advised for implementation of the earlier committee's recommendations on the matter.

SLDC and DTL to update.

### **2.10 Contingency Plan for 220kV Substation Indra Prastha.**

DTL informed that the operation and maintenance activities of 220 KV S/Stn. Indraprastha has been entrusted to DTL since Jan, 2010 after closure of IP Generating Stn. Main control room of sub-station is situated in main generation building which is about half kilometre away from switchyard. Following are the main problems in operation of sub-station-

1. Main control room is in worst condition due to dismantling process of generation equipments by the contractor of IPGCL. Wall & ceiling of control room is damaged at various places and in every rainy season rainy water showers in control room & on panels which leads to many unwanted tripping / breakdowns.
2. During the process of dismantling of control cables from the switchyard to the control room, the control cables got damaged many times and for restoring the system joints are made in the control cables, moreover tracing the faulty control cable and revival of system is very difficult as well as time consuming. As the control room is around half kilometer away and situated on second floor in generation building, it takes around two working days to replace a control cable.
3. In the recent past, there are several incident of cutting/ damaging of control cables by some mischievous elements leading to many trippings and affecting the metering of feeders. Control cables laid for protection and control system were replaced to restore the system whereas energy meter reading of 12 nos. 33KV feeders is still affected and in the process of revival. Many times control cables and optical fiber laid for SCADA system got damaged resulting in loss of data communication to SLDC which created problems for System Operation in maintaining the Grid system of Delhi. Control cables laid for data communication of 220KV feeders replaced many times to restore the data communication and communication of data of all 33KV feeders is still affected.
4. Boundary wall of IP sub-station is not proper and it is only covered by boundary wall from Ring road side. Several incidents of theft/ attempt of theft are reported in this sub-station making the sub-station very unsafe for staff and material.



5. There is a pack of stray monkeys which moves freely in the switchyard, control room and offices due to access from the damaged control room walls and ceiling and smash up in control room again making it very unsafe for staff and equipments.
6. One small control room is also situated in switchyard for control & operation of 100MVA No. III and 33KV Incomer No. III. There are several wide cracks in wall & roof of this room which makes it very unsafe to operator and control panels.

In view of above circumstances O&M wing is not able to run this sub-station smoothly & reliably as most of the above problems are beyond control of O&M department. It is pertinent to mention here that 24 nos. 33KV outgoing feeders emanates from this sub-station feeding the load in the VVIP areas covered under the jurisdiction of BRPL, BYPL & NDMC and possibilities of this sub-station for going in long outages in a part or in whole cannot be ruled out.

DTL requested that matter may be deliberated and contingency plan in case of outage in part or whole of Indraprastha substation may be prepared by the affected DISCOMS in consultation with SLDC.

During OCC meeting dt. 25.04.14, NDMC informed that they have provision to shift the load from IP stn during contingency conditions at IP stn BRPL informed that they shall shift the load from IP Stn subject to load margin at Lodhi Road. BYPL informed that they have provision to shift the load from IP Stn. except for IG Stadium circuit.

BRPL informed that meeting of affected area load shall be taken care on real time. Further, in order to meet future contingencies, BRPL informed that establishment of 220/33KV Power Transformers at Maharani Bagh Substation shall be in the interest of power sector of Delhi as it will directly connect the load to the Maharani Bagh Grid which is presently under loaded. BRPL requested DTL to provide 8 nos. 33 KV feeders by establishing 220/33KV Power Transformers at Maharani Bagh substation.

OCC once again advised DTL's planning to study the feasibility and act swiftly.

DTL to update.

### **2.11 Metering issue of 11kV BBMB circuit emanating from 220kV S/Stn. Narela**

During OCC meeting dtd. 29.05.14, DTL informed that 1 no. 11kV BBMB circuit is emanating from 220kV DTL Narela Substation and feeding at 220kV BBMB Narela Substation for auxiliary supply to BBMB Narela Substation since the time of DESU/DVB. In case of failure of their 11kV source, this circuit serves the purpose of emergency supply. This circuit supply has been used by BBMB Narela on rare occasion during exigency at their end. But the energy consumed by BBMB through this feeder is not being accounted for BBMB, but booked to TPDDL at 66kV Bus of 220kV Narela DTL S/Stn.

During the OCC meeting dt. 30.07.14, TPDDL informed that they shall provide desired details by 31.08.14.

TPDDL informed the following details regarding energy meter related:

- As discussed in the Metering Committee AMR will be installed on all the DTL billing meters, but till date there is no progress.
- Data provided by DTL usually gets delayed and due to this we are not able to submit reports on time to DERC.
- One 11kV feeder BBMB from Narela 220kV is feeding supply to Haryana, but TPDDL is billed on the transformer, so these units should be subtracted from TPDDL billing.
- CT-PT testing and meter testing of DTL billing points is pending.
- Meter installation at Wazirpur-3 grid of TPDDL from Wazirpur 220kV Grid as CT metering core is being used by DTL.

DTL and TPDDL to deliberate.

### **2.12 Over loading of 20MVA Trfs. at 220kV Najafgarh Substations.**

DTL informed that during this summer season, excessive over loading on all the 3 nos. 20MVA Trsf. has been noted for about whole summer season. For maintaining the loading condition of 20 MVA Trsf., rotational load shedding on 11KV feeders is being resorted to for about whole summer season. Due to this, local public are facing hardships due to non availability of power supply. In the past, due to this menace, DTL installations have been intruded upon by local people and try to sabotage the DTL installations at 220KV S/Stn. Najafgarh.

Further, whenever DTL avails any planned/emergency shutdown on any of the 11KV outgoing feeders emanating from 220KV S/Stn. Najafgarh, BRPL is always unable to back feed the load of any of the 11KV feeders. It is prudent to mention that this is contrary to the transfer schemes rules 2001 vide which it was mandated that DISCOMS shall shift their 11KV loads from existing 220KV S/Stns. of DTL. However, no proper action has been taken by BRPL till date for shifting of load from DTL Najafgarh S/Stn. Accordingly, BRPL has to erect and commission new 66KV S/Stns. and shift the 11KV load from Najafgarh DTL S/Stn. to their thus erected substations.

BRPL informed that the Delhi Jal Board substation is expected by 15<sup>th</sup> August, 2014 which will give relief on 20MVA transformers at Najafgarh substation to some extent.

BRPL to provide the status of Delhi Jal Board Substation.

### **2.13 LILO of existing 66kV NJF-G-5 PPK-1 from 220kV Substation Najafgarh:-**

DTL informed that a PTW Request made by Sh Sandeep Kumar, P&C deptt of BRPL at 07.55 Hrs on 03.07.2014 at 220kV Substation Najafgarh for the 66kV NJF-G-5 PPK-1 Line for LILOing the said Line at upcoming 66kV DMRC Metro Depot at Najafgarh. In this regard, DTL requested BRPL through email dated 02.07.2014 for entering into connection agreement with DTL for change of configuration of this line as the same was being LILOed at upcoming 66kV DMRC Metro Depot at Najafgarh in line with DERC regulations/ guidelines. However, BRPL has not carried any connection agreement and charged the said lines on 16:57Hrs on 03.07.2014. Further, DTL informed BRPL has not taken any consent of DTL protection deptt. And even the relay setting have not been revised/ changed as per revised configuration of said line.

Also, the said Line of 66kV G-5 PPK-1 is on no load w.e.f 03.07.2014 and due to this other DTL substations are being overloaded due to non-taking of load on this line.

In this regard, DTL requested BRPL to look into the issue.

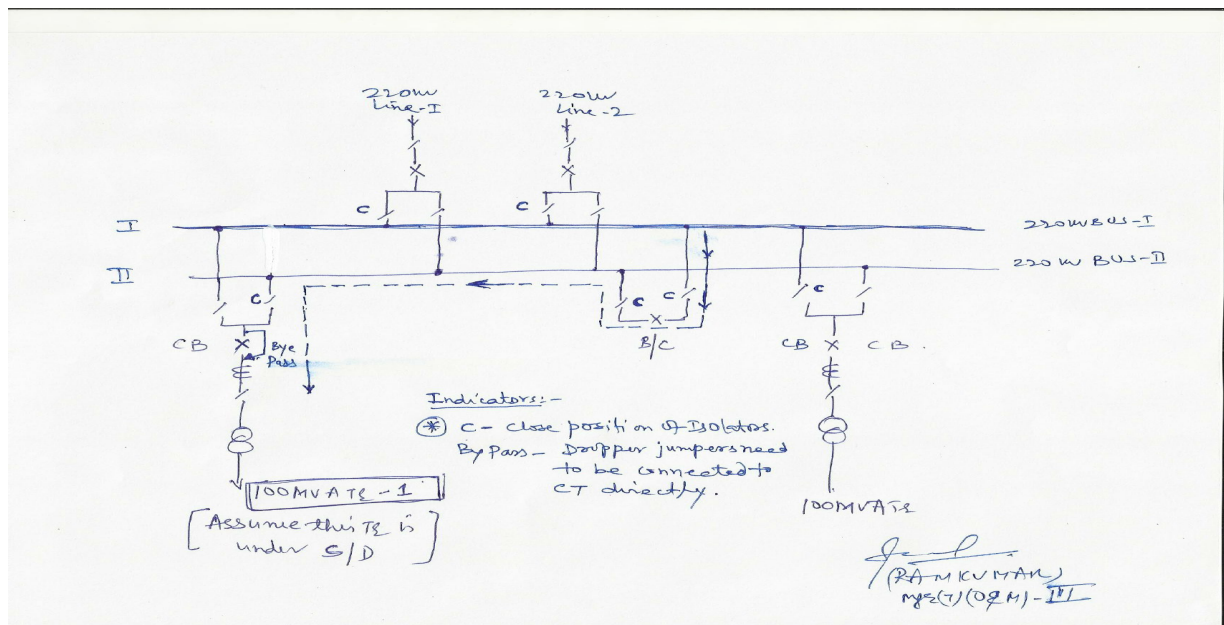
BRPL informed that they shall make connection agreement for the said circuit with DTL.

BRPL to update the status on connection agreement.

### 2.14 Overhauling of Circuit Breakers at 220kV Pappankalan-I Substation.

Complete overhauling of 06 no. 220kV CBs of 06 No. 220kV Bays including of 100MVA Trs and 220kV Lines at 220kV Substation Pappankalan-1 has been awarded to M/s ABB and the work of overhauling is to be started soon. The usual time for carrying out the overhauling work of each 220kV Circuit Breaker is about 5-6 days.

However, it is very well known that 220kV PPK-1 substation is heavily loaded and as such, it is not possible for availing the shutdown of any 100MVA Tr / 220kV Line for continuous 5-6 days. As such, an alternate arrangement has been made. The same has been drawn in Single Line diagram as given below:



The operation schedule shall be as follows: (Assume O/H of CB of 100MVA is to be carried out)

At first 100MVA Tr shall be under shutdown for 5-6 hours for complete dismantling of all the 3 no. poles of the CB and at the same time dropper jumper from cross bus shall be connected to CT

of the 100MVA Tr No-1. Both the 220kV Lines and other Trs shall be taken to 220kV Bus-1. The other Trs and Lines shall be working without any interruptions. Now, after dismantling the poles of the CB, the CB shall be bypassed as shown in the fig. The Protection of the 100 MVA Tr Bay shall be shifted to Bus Coupler Bay CB in the meantime. After, the switching of the Protection from Tr Bay to B/C bay, the 100MVA Tr can also be taken on load. In case of any eventualities, the B/C bay Breaker will get tripped and clear the fault of the 100MVA Tr No.-1.

Later on after the CB is overhauled, again the TR shall be taken under shutdown for erecting the overhauled poles. The bye pass of CB shall be removed and the Cross Bus jumpers shall be directly connected to main CB and the protection shall be switched to main CB of the Tr.

The above sequence shall be followed for other breakers also.

By following the above, our 6 no. 220kV CBs shall be overhauled in bare minimum outage of 5-6 hours of the TR/ Line bay.

Members may deliberate the above proposal so as the in bare minimum outage of Line/ Tr bays, our CBs of 220kV Class are overhauled.

### **2.15 Rerouting of OPGW of 66 KV Gopalpur -Jahangirpuri line**

DTL fibre ring has OPGW installed on Gopalpur-Jahanpuri- Narela line. 66 KV Jahangipuri line is maintained by TPDDL. It is informed through email dt. 22-08-14 that laying of underground EHV cable on Jahanpuri –Gopalpur route (from Tower no. 18 to Tower no. 35 which is at JHP grid) is going to dismantle the said tower line, as urgently required by PWD, for construction of road and have requested DTL to make immediate arrangement to shift the links and dismantle the link.

In this regard, Manager (Communication) of DTL along with communication team visited TPDDL office and PWD office on dt. 25-08-14.

Since, neither the exact scope of work nor payment issues was clarified through emails of TPDDL. Hence, on personal efforts DTL gathered the below information from TPDDL office:

- (a) Tower no. 8 to 12 TPDDL has shifted the line to overhead line and OPGW is required to be shifted.
- (b) Tower no. 15 to 18 are required to be dismantled due to DMRC work
- (c) Tower no. 18 to 35 is to be dismantled as urgently required by PWD ,for construction of road

It was also gathered from Executive Engineer PWD Flyover Division F133 that PWD has paid substantial amount to TPDDL for shifting work.

Presently AMC of only overhead fibre is with DTL through PGCIL. The work of jointing of rerouted underground fibre with overhead OPGW can be taken through AMC contractor but issue of rerouting underground fibre, providing permissions etc is to be taken up, modalities for payment issues to be decided at appropriate level.

In view of the above, OPGW is vital for Delhi power system operation and members may deliberate the issue for rerouting of about 3.5 kms of OPGW to underground fibre.

### **3.0 SLDC Agenda Points**

#### **3.1 Power map of 66/33kV network of Distribution companies.**

SLDC requested that the power map is required in GIS format and requested DISCOMs to submit the same. During earlier OCC meetings, SLDC informed that they have received the power map from all DISCOMs except NDMC.

DTL also requested that SLD of DISCOMs may also be made available to it for better co-ordination and operation of grid.

During the meeting dt.30.07.14, OCC advised DISCOMs to provide the requisite information as requested.

DISCOMs to update.

#### **3.2 Observation of heavy oscillations during the morning hours of 09.08.14 and 10.08.14 in Northern region (NRLDC point)**

NRLDC informed heavy oscillations observed from 04:00Hrs to 06:00Hrs on dt.09.08.14 and from 02:30Hrs to 04:30Hrs on dt.10.08.14. The frequency of oscillations observed was ~0.75Hz with very less damping to the tune of less than 2%.

The following data is required by NRLDC for analysis of the event:

- MW/MVAR data, Event Logger and associated plots of generating units.
- Information regarding the hunting observed in the Generating unit.
- Data of DR (Disturbance Recorder), EL (Event Logger) and associated plots of response characteristics of HVDCs, SVC, TCSCs in the region.
- Tripping of any element, excessive line loading observed.
- Any other relevant information.

Members may deliberate.

### **4.0 Agenda points of TPDDL.**

#### **4.1 Inability to take load on 220kV Rohini-II.**

During the meeting dtd. 25.04.14, TPDDL informed that 220kV RHN T-off at Rohini-II from 400kV BWN is not reliable and separate circuit from 400kV BWN is required as early as possible.

DTL informed that procurement of tower material is under process and the work of erection of circuit of 220kV Bawana – Rohini-II will take another six months. TPDDL also informed that no more load shifting to Rohini-II is possible.

DTL to update the latest status.

#### **4.2 Reliability of Wazirabad water works.**

TPDDL informed that during last FY, about 22 interruptions occurred at WZB Water works due to STS interruption out of which 17 are on account of DTL (i.e due to tripping of either 220kV GPL-Mandola Ckt or tripping of 100MVA at Gopal Pur). In those, maximum tripping are more than 15mins and in some cases tripping restoration time is even more than 30 mins.

On 08<sup>th</sup> May, 2014, supply was again affected for 50mins. Water Works is an essential supply of TPDDL. In order to maintain reliable power supply, TPDDL requested DTL to take care of the aforesaid issue and take suitable action to restore supply of WZB through any alternate source as early as possible.

During the OCC meeting 29.05.14, OCC advised DTL to study the cause of excessive trippings and to prepare necessary contingency plans in case of such failures.

During the meeting dt.30.07.14, TPDDL requested to extend the supply of Wazirabad in case of supply failure from Mandola. OCC advised SLDC to extend supply to Gopalpur in bare minimum possible time, in case of failure of Mandola – Gopalpur Circuits.OCC also advised DTL to energize the 2<sup>nd</sup> circuit of 220kV Wazirabad – Gopalpur at the earliest.

DTL to deliberate.

#### **4.3 Status of 220kV Peeragarhi**

As now 33kV Ranibagh CC cable is laid down to 220kV Peeragarhi Grid. But work on 220kV Peeragarghi is not completed yet due to which TPDDL was unable to shift load from existing Ranibagh Grid. Beside of that some 11kV feeders are also laid down but TPDDL can't charge it from new grid as no juice is available in existing SMB- Ranibagh Ckt.

During the OCC meeting dt. 30.07.14, DTL informed that the substation is already ready. However, the U/G Cable work is in progress and no supply is available to energize the substation at present. DISCOMs suggested to energize the substation on back-feed from BRPL feed. DTL informed that the Peeragarhi Substation is expected by the end of December, 2014.

DTL to update the latest status of 220kV Peeragarhi Subsation.

#### 4.4 Real Time actual Drawl Monitoring Issue:

At SLDC website, in TPDDL actual Drawl, Active Power of 220 KV Kanjhawala taken from Load of 100 MVA PTR-1, 2 in which Load of 66 KV DMRC Circuit from 220 KV Kanjhawala also included. DMRC Circuit from 220 KV Kanjhawala belongs to BSES only. 10-15 MW load run on this circuit. Due to this TPDDL Actual drawl is at higher side. Print shot for reference is as below:

#### **Feeder wise load of NDPL at 8/25/2014 8:06:37 PM**

DISCOM	Sub-Station	Feeder / Transformer	Load (MW)
NDPL	BAWANA	TRANSFORMER 1	59.12
NDPL	DSIDC	TRANSFORMERS	78.33
NDPL	GOPALPUR	TRANSFORMERS	179.75
NDPL	KANJHAWLA	TRANSFORMER- 1	66.94
NDPL	KANJHAWLA	TRANSFORMER- 2	62.62
NDPL	KASHMIRI GATE	220 kv DMRC-1	0.00
NDPL	KASHMIRI GATE	220 kv DMRC-2	12.14
NDPL	KASHMIRI GATE	B_CIVILLN_KGAT	0.00
NDPL	Mundka	C_Mundka_Ghevra	25.00
NDPL	Mundka	C_Mundka_Mangolpuri	20.00
NDPL	NARAINA	B_NRINA_INDERPURI	13.96
NDPL	NARAINA	B_NRINA_REWAR1	14.59
NDPL	NARAINA	B_NRINA_REWAR2	16.78
NDPL	NARELA	TRANSFORMERS	189.54
NDPL	ROHINI	TRANSFORMERS	248.85
NDPL	ROHINI-2	TRANSFORMERS	32.61
NDPL	SHALIMAR BAGH	TRANSFORMERS	135.67
NDPL	SUBZI MANDI	TRANSFORMERS	103.80
NDPL	Wazirpur	Transformers	40.66

Members may deliberate.

#### 5.0 Status of additional allocated bay for Bodela-1 grid (BRPL Agenda Point).

In earlier OCC, DTL informed BRPL one additional allocated bay for Bodela 1 grid is ready. BRPL informed that Commercial Agreement has been done.

In OCC meeting dt. 30.07.14, BRPL informed that cable laying is in progress and expected by 15<sup>th</sup> August, 2014.

BRPL to update.

#### 6.0 Proposed Shutdowns

##### 6.1 Proposed shutdown at 220kV Lodhi Road Substation

DTL proposed the following shutdown at 220kV Lodhi Road Substation for shifting of 33kV Load to newly installed 33kV GIS Switchgear:

S. No.	Proposed Date & time of S/D	Name of the feeder / equipment	Work to be carried out
1	15.09.14 to 17.09.14	100MVA Tx-I along with respective 33kV feeders	Shifting of 33kV Load to newly installed 33kV GIS Switchgear
2	18.09.14 to 20.09.14	100MVA Tx-II along with respective 33kV feeders	

Members may deliberate.

### 6.2 Proposed shutdown at Maharani Bagh Substation.

DTL proposed the following shutdowns at Maharani Bagh Substation for ETC of relays of Siemens make by M/s Siemens Engineer:

S. No.	Proposed Date & time of S/D	Name of the feeder / equipment	Work to be carried out
1	28.08.14 (10:00Hrs to 13:00 Hrs)	Electric Lane Ckt.-I	Installation, testing and commissioning of Main-II Siemens Protection Scheme
2	28.08.14 (13:30Hrs to 19:00 Hrs)	Electric Lane Ckt.-II	-do-
3	29.08.14 (10:00Hrs to 13:00 Hrs)	Trauma Center Ckt-I	-do-
4	29.08.14 (13:30Hrs to 19:00 Hrs)	Trauma Center Ckt-II	-do-
5	30.08.14 (10:00Hrs to 13:00 Hrs)	Masjid Moth Ckt.-I	-do-
6	30.08.14 (13:30Hrs to 19:00 Hrs)	Masjid Moth Ckt.-II	-do-

Members may deliberate.

### 6.3 Proposed shutdown at 220kV Patparganj Substation.

DTL proposed the following shutdowns at 220kV Patparganj Substation for replacement of 33kV isolators as the existing isolators had already completed the useful life of 25 years (as per DERC norms). Said Isolators shall be replaced on 33KV Bus-I and during replacement of 07nos 33KV Isolators, 33KV Bus-I shall remain under shutdown:

S. No.	Proposed Date & time of S/D	Name of the feeder / equipment	Work to be carried out
1	02.09.14 (10:00Hrs) to 03.09.14(17:00Hrs)	33 KV KARKARDOOMA CKT-I With 33 KV BUS-I	For replacement of BUS-I isolator and general cleaning and Maintenance of the Bay
2	04.09.14 (10:00Hrs) to 05.09.14(17:00Hrs)	33 KV KARKARDOOMA CKT-II	-do-
3	06.09.14 (10:00Hrs) to 07.09.14(17:00Hrs)	33 KV CBD SHAHDARA	-do-
4	08.09.14 (10:00Hrs) to 09.09.14(17:00Hrs)	33 KV GURU ANGAD NAGAR CKT-	-do-
5	10.09.14 (10:00Hrs) to 11.09.14(17:00Hrs)	33 KV GURU ANGAD NAGAR CKT-II	-do-
6	12.09.14 (10:00Hrs) to 13.09.14(17:00Hrs)	33 KV PREET VIHAR	-do-
7	14.09.14 (10:00Hrs) to 15.09.14(17:00Hrs)	33 KV SHAKAR PUR	-do-

Members may deliberate.



#### 6.4 Proposed shutdown at 220kV Okhla Substation.

DTL proposed the following shutdowns at 220kV Okhla Substation:

S. No.	Proposed Date & time of S/D	Name of the feeder / equipment	Work to be carried out	Remarks
1	30.08.2014 from 08:00 Hrs to 15:00 Hrs	100 MVA, 220/33 KV Transformer No. IV	Replacement of LAs on R,Y & B Phase	The load to be Taken on Transformer No. III & V, The excess load if any to be managed by BRPL
2	31.08.2014 from 08:00 Hrs to 15:00 Hrs	100 MVA, 220/33 KV Transformer No.-V	Replacement of LAs on R,Y & B Phase	The load to be Taken on Transformer No. III & IV, The excess load if any to be managed by BRPL
3	31.08.2014 from 08:00 Hrs to 15:00 Hrs	11 KV Bus Bar-II along with 11 KV Incomer- 11 and outgoing feeders of Alaknanda via TA, A-8 Kalkaji extn, A-12 Kalkaji Extn, Tara Apptt, Govindpuri puri Gali No.5	General Maintenance of Bus bar-II and associated feeder panels	The load to be managed by BRPL

Members may deliberate.

#### 6.5 Proposed shutdown at 220kV Najafgarh Substation.

DTL proposed the following shutdowns at 220kV Najafgarh Substation:

S. No.	Proposed Date & time of S/D	Name of the feeder / equipment	Work to be carried out	Remarks
1	02.09.14 (06:00 to 17:30hrs)	20MVA Tr. No3 along with 66KV bus-bar No.-2	For replacement of Bus-1 & line isolators with new Isolator& For replacement of Bus-2 isolator of jaffer pur Ckt.-2	Load will be shifted to 20MVA Tr. No.1 & 66KV Bus –Bar No-1,& switch off the 66KV O/G feeder Nangloi & Jaffer Pur-2
2	03.09.14 (06:00 to 17:30hrs)	20MVA Tr No-1 along with 66KV bus -1	For replacement of Bus-1 Isolators with new Isolator & For replacement of Bus-1 Isolators with new Isolator of 66KV Cap. bank-2	Load will be shifted to 20MVA Tr. No.2 & 66KV Bus –Bar No-2
3	04.09.14 (06:00 to 17:00hrs)	66KV Jaffer Pur 1& 2 along with 66KV bus –bar No-1	For replacement of Bus-1 isolators with new Isolator	66KV Jaffer Pur 1 &2

Members may deliberate.

#### 7.0 Any additional agenda points with the permission of the Chair.

#### 8.0 Date and time of next OCC meeting.